



EVACUATION ALERT

Town of Princeton see attached map

Date: *(12/11/2025)* & Time: 2:30 AM

This Evacuation Alert is by Town of Princeton due to *Atmospheric River event with potential for flooding in the area outlined in yellow on attached map.*

Because of the potential threats to health, safety, and the welfare of persons, this **Evacuation Alert** is issued for the following areas:

Area outlined in yellow on the attached map, including parts of Corina Avenue, Allison Flats and downtown Princeton

See attached map

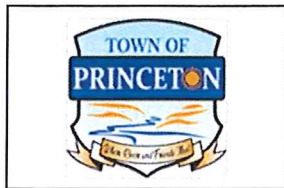
This evacuation alert is issued to prepare you to evacuate your premises or property should an evacuation order be made. Residents will be given as much advance notice as possible before evacuation is ordered; however, you may receive limited notice due to changing conditions.

Further information will be issued at *2:00 PM December 11, 2025*. You can also visit *Town of Princeton Emergency Management Facebook page and Voyent Alert* or www.EmergencyInfoBC.ca for more information.




Ed Atkinson
Manager of Protective Services

WHAT YOU SHOULD DO:

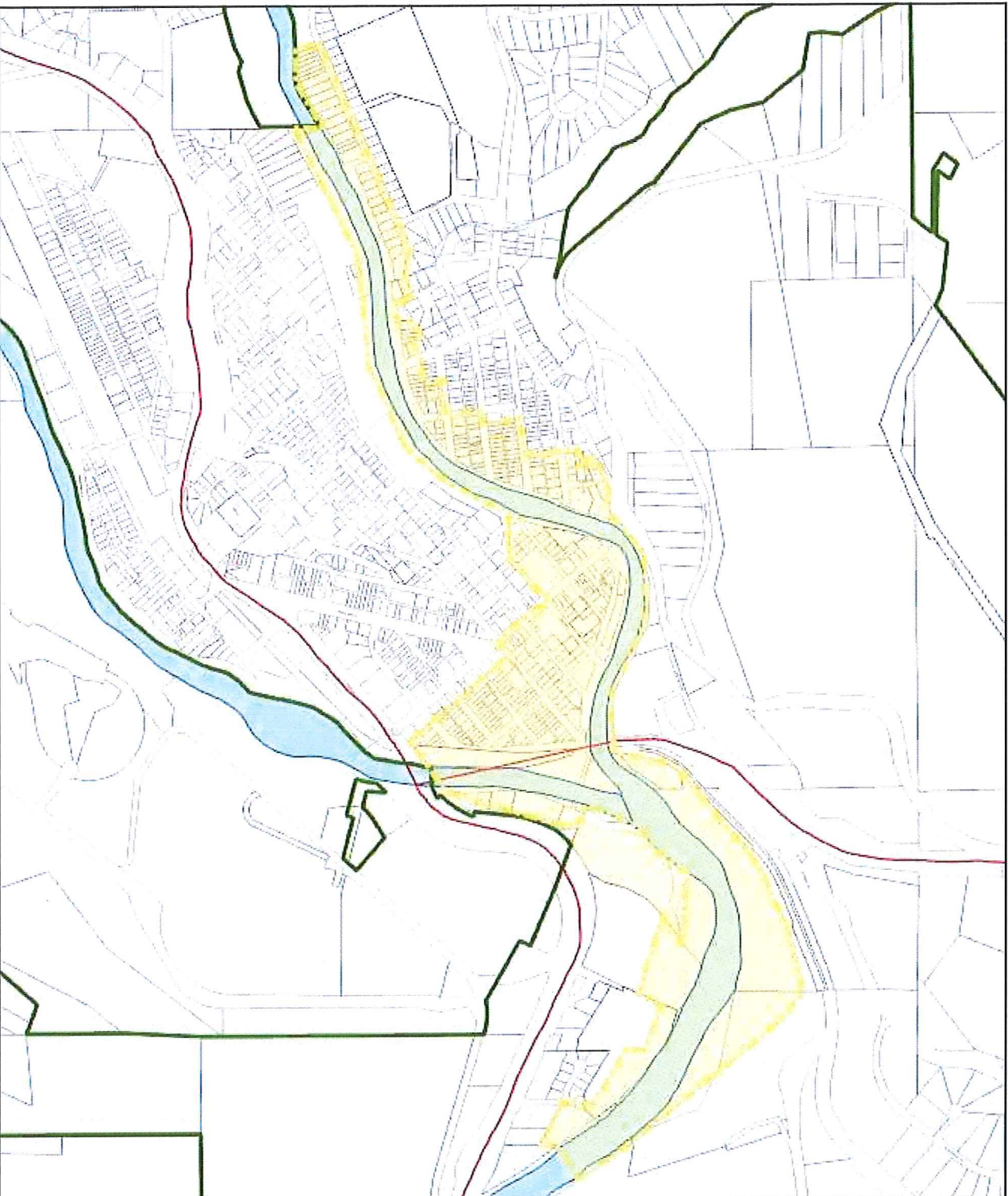
- Locate all family members and designate a meeting area outside the evacuation alert area, should an evacuation order be made while family members are separated.
- Pack essential items such as government-issued ID, medications, important documents (e.g., insurance, and mortgage / tenancy information), and immediate care needs for dependents.
- Prepare to evacuate disabled persons, children, and/or neighbours if assistance is needed.
- Prepare to take pets with you and move livestock to a safe area (if possible).
- Arrange transportation for all your household members. Fill the gas tanks of personal vehicles that will be used in the evacuation. If transportation assistance will be needed to evacuate, call [250-273-0143](tel:250-273-0143).
- Review your home or tenant insurance policy to understand what coverage you may have for lodging and food in the event of being evacuated. Most basic insurance policies cover living expenses during an evacuation.
- Arrange accommodation for all members of the residence. If possible, plan to stay with family or friends as accommodations may be in short supply.
- If you will require government assistance to meet your basic needs if evacuated, like lodging and food, Emergency Support Services will be available. Create a profile at ess.gov.bc.ca.



- Follow the guidance of [municipal officials, Princeton Fire Department, RCMP, Interior Health](#).
- Wait for an evacuation order to be issued before evacuating. If you evacuate before being directed or authorized, you may not yet qualify for Emergency Support Services should you need it, as resources will be focused on those who have been ordered to evacuate.
- Monitor [Town of Princeton Emergency Management Facebook Page](#) and [Voyent Alert](#) for information on evacuation orders and the location of reception centre(s). If you can meet your own basic needs if evacuated, you do not need to go to a reception centre.

- Legend**
-  Electoral Area Boundaries
 -  Major Highways
 -  Indian Reserve
 -  Parks
 -  Streams
 -  Major Lakes
 -  Small Lakes

1 : 20,564



0.6 0 0.32 0.6 Miles

WGS_1984_Web_Mercator_Auxiliary_Sphere
© Regional District Okanagan-Similkameen

This is a consolidated map compiled from representational data to be used for convenience only and has no legal sanction. The Regional District of Okanagan-Similkameen makes no warranty to the correctness or accuracy of the information on this map.