

Lytton First Nation

DATE: August 4, 2023

TIME: 1840 pm

Evacuation Order

Pursuant to Nlaka'pamux jurisdiction and the authority of Lytton First Nation Chief and Council, an **Evacuation Order** is being issued due to immediate danger to life and safety due to an uncontrolled wildfire.

The **Evacuation Order** is for the following Indian Reserves:

Yawaucht 11, Tsaukan 12, Cameron Bar 13, Lytton 13A

**YOU MUST LEAVE THESE AREAS
IMMEDIATELY**

Evacuation Route:

Evacuation route is north to Lillooet on the Westside Road or South to Lytton via the reaction ferry.

Lytton First Nation ESS support:

William Dreaver at 778-254-9786

Cheyanna Hanna at 250-256-8658



PO Box 20
Lytton, BC
V0K 1Z0

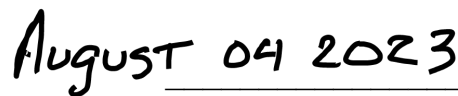
PHONE 250.455.2304
WEBSITE www.lfn.band

- Take an emergency survival / grab and go kit with you.
- Make sure you take prescription medicines and identification for the entire family.
- Listen to the radio and follow instructions from local emergency officials.
- If you are instructed to do so, shut off water, gas and electricity.
- Make arrangements for your pets. Local emergency officials will advise you.
- Wear clothes and shoes appropriate for the conditions.
- Shut your windows and lock your home.
- Follow the routes specified by emergency officials. Don't take shortcuts. A shortcut could take you to a blocked or dangerous area.
- If you have time, contact others family members letting them know when you left and where you went.

Further information will be issued when available.



Chief, Lytton First Nation



Date:

This evacuation order will remain in force until further notice, unless cancelled by order of the Lytton First Nation.



PO Box 20
Lytton, BC
V0K 1Z0

PHONE 250.455.2304
WEBSITE www.lfn.band

585000

590000

595000

600000

5595000

5595000

5590000

5590000

5585000

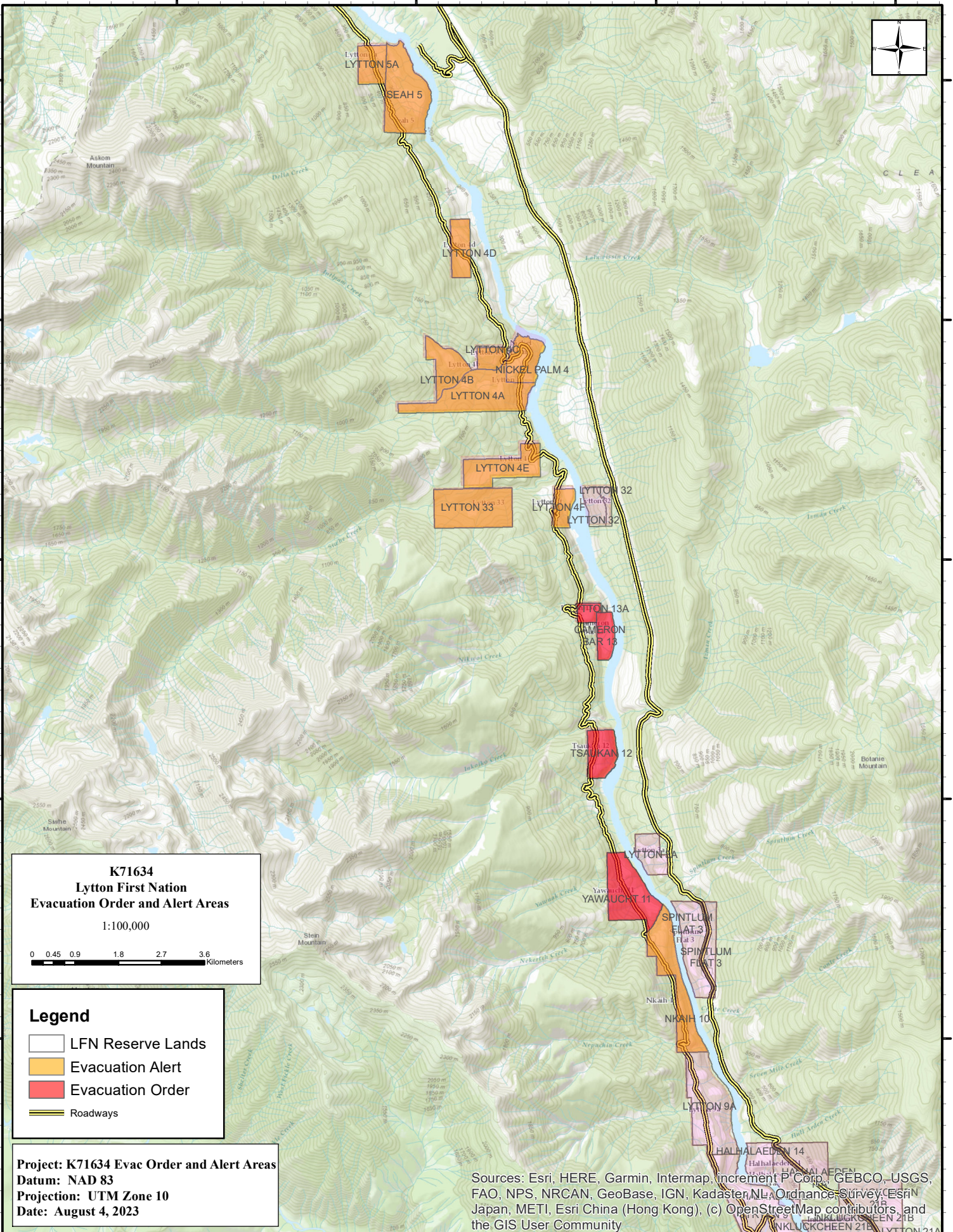
5585000

5580000

5580000

5575000

5575000



K71634
Lytton First Nation
Evacuation Order and Alert Areas
 1:100,000

Legend

- LFN Reserve Lands
- Evacuation Alert
- Evacuation Order
- Roadways

Project: K71634 Evac Order and Alert Areas
Datum: NAD 83
Projection: UTM Zone 10
Date: August 4, 2023

Sources: Esri, HERE, Garmin, Intermap, increment P Corp., GEBCO, USGS, FAO, NPS, NRCAN, GeoBase, IGN, Kadaster, NL, Ordnance Survey, Esri Japan, METI, Esri China (Hong Kong), (c) OpenStreetMap contributors, and the GIS User Community

585000

590000

595000

600000